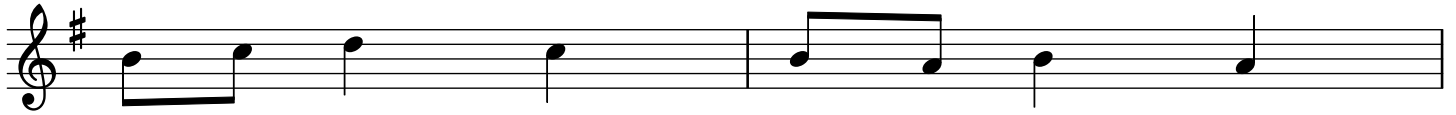


Jesu, geh voran
Jesus, Lead the Way

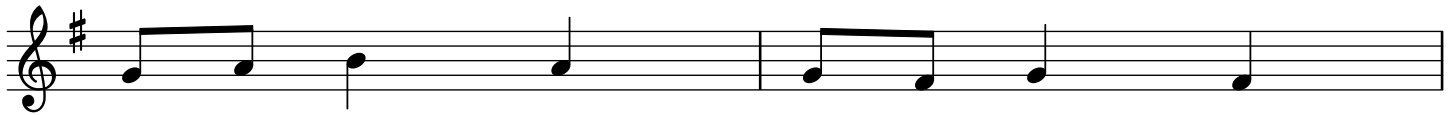
Jane Borthwick / ROCHELLE



1. Je - sus, lead the way through our life's long day.
2. Je - sus, be our light in the midst of night.
3. When we seek re - lief from a long - felt grief;
4. Je - sus, still lead on till our rest be won.



1. When at times the way is cheer - less,
2. Let no faith - less fears o'er - take us;
3. when temp - ta - tions come al - lur - ing,
4. If you lead us through rough plac - es,



1. help us fol - low, calm and fear - less.
2. let not faith and hope for - sake us.
3. make us pa - tient and en - dur - ing.
4. grant us your re - deem - ing grac - es.



1. Guide us by your hand to the prom - ised land.
2. May we feel you near as we wor - ship here.
3. Lord, we seek your grace in this ho - ly place.
4. When our course is o'er, o - pen heav - en's door.

Inspiration: Mark 10:32; "Jesu, geh voran"; Nicholas Ludwig von Zinzendorf, 1700-1760.
Lyrics: 55.88.55; Jane Borthwick, 1813-1897, as "Jesus, Still Lead On", in the "Free Church Magazine", 1846.
Music: ROCHELLE (aka SEELENBRÄUTIGAM); Adam Drese, 1620-1701.